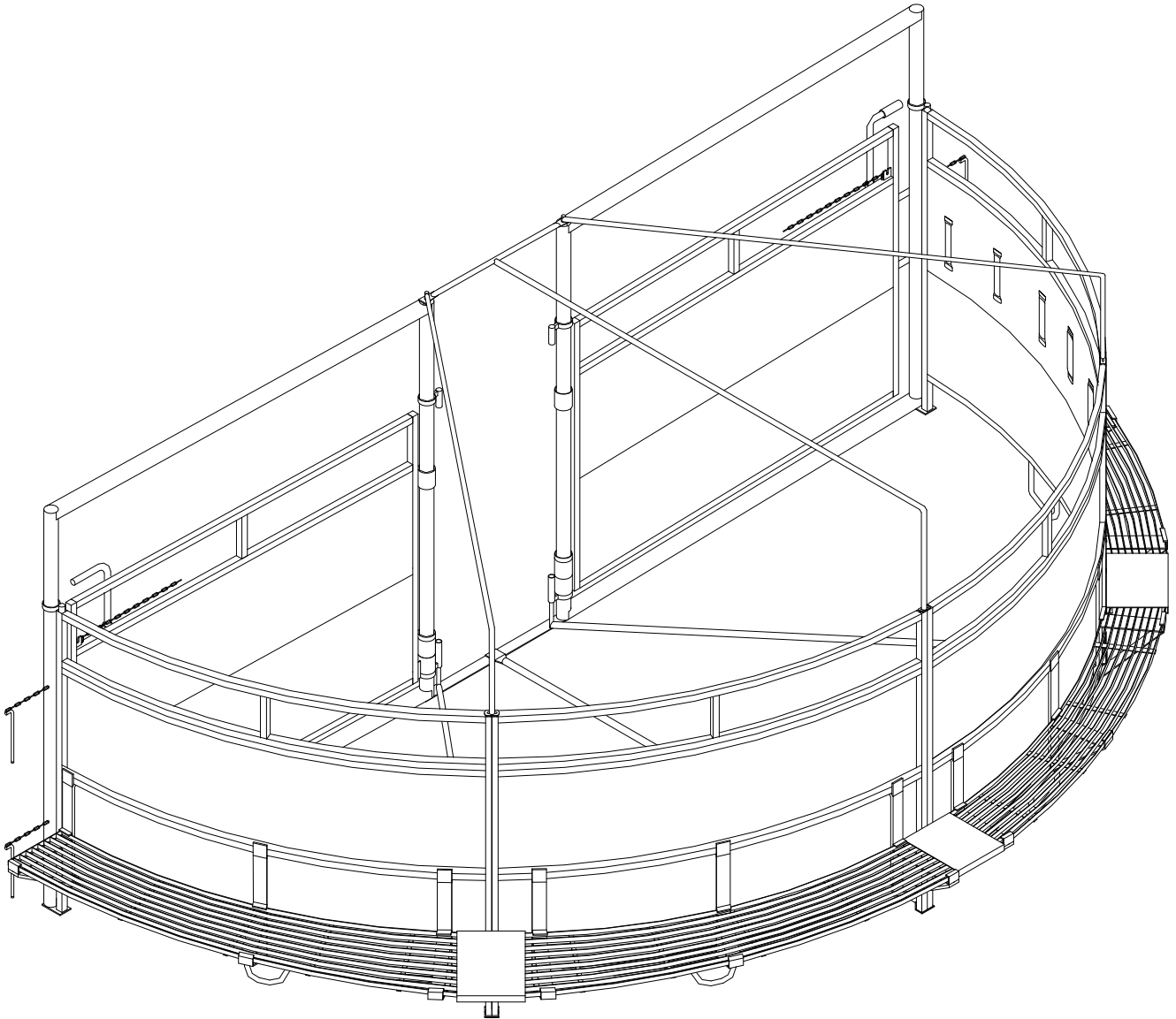


# SYSTEM 2000 HALF SWEEP TUB

ASSEMBLY INSTRUCTIONS

#007-50100



# POWDER RIVER

• LIVESTOCK HANDLING EQUIPMENT •

[www.powderriver.com](http://www.powderriver.com)

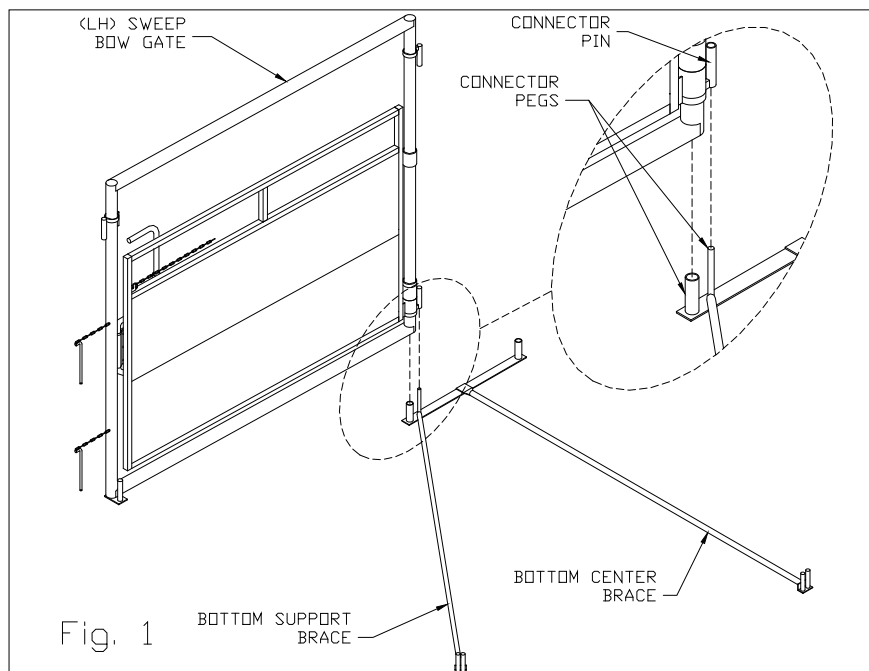
1-800-453-5318

**CAUTION!**

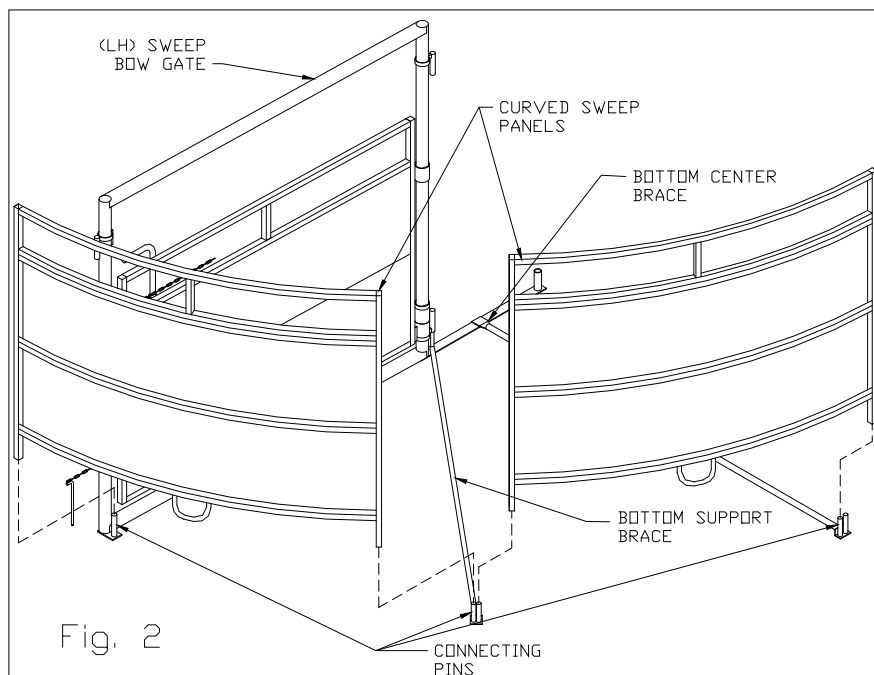
*GATES AND PANELS ARE HEAVY AND WILL FALL OVER IF NOT PROPERLY SUPPORTED WHILE BEING INSTALLED. IT IS BEST TO USE A FORKLIFT OR TRACTOR TO LIFT THE HEAVY ITEMS!*

**STEP 1:**

Place the "T" end of the Bottom Center Brace where the alley will begin. Lower the (left-hand) Sweep Bow Gate over the connector peg on the Bottom Center Brace. Once the gate has started to slide over the connector peg position the Bottom Support Brace connector peg to slide into the connecting pin on the gate and continue lowering the gate until it rests on the ground as shown in figure 1.

**STEP 2:**

Slide two Curved Sweep Panels onto the connecting pins on the Sweep Bow Gate, Bottom Support Brace, and Bottom Center Brace as shown in figure 2.

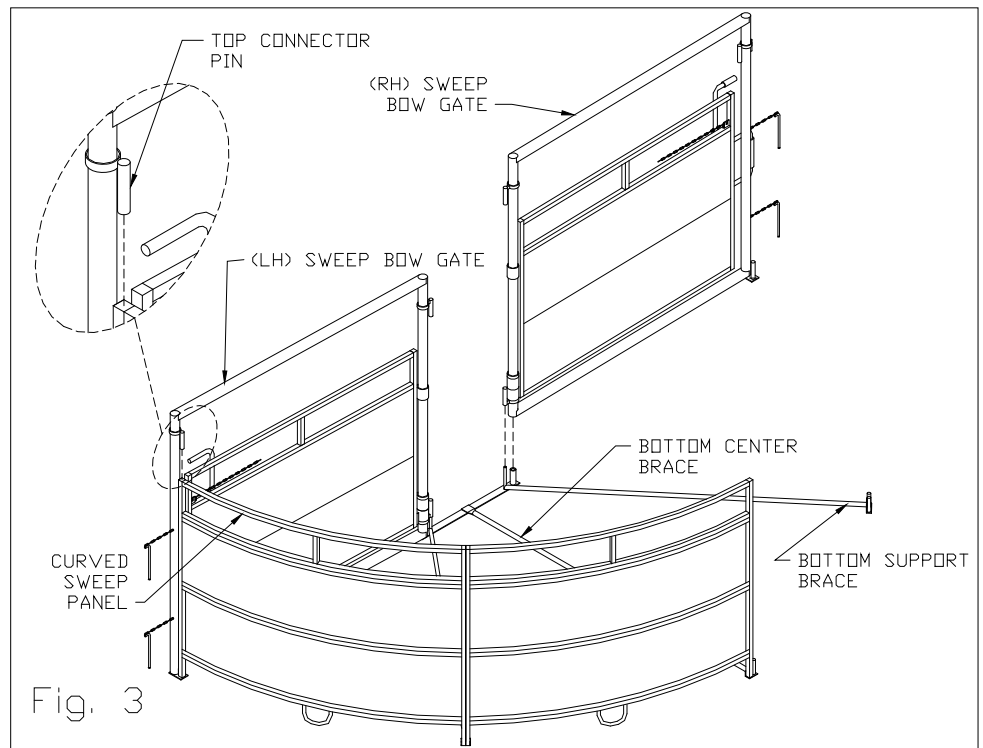


**STEP 3:**

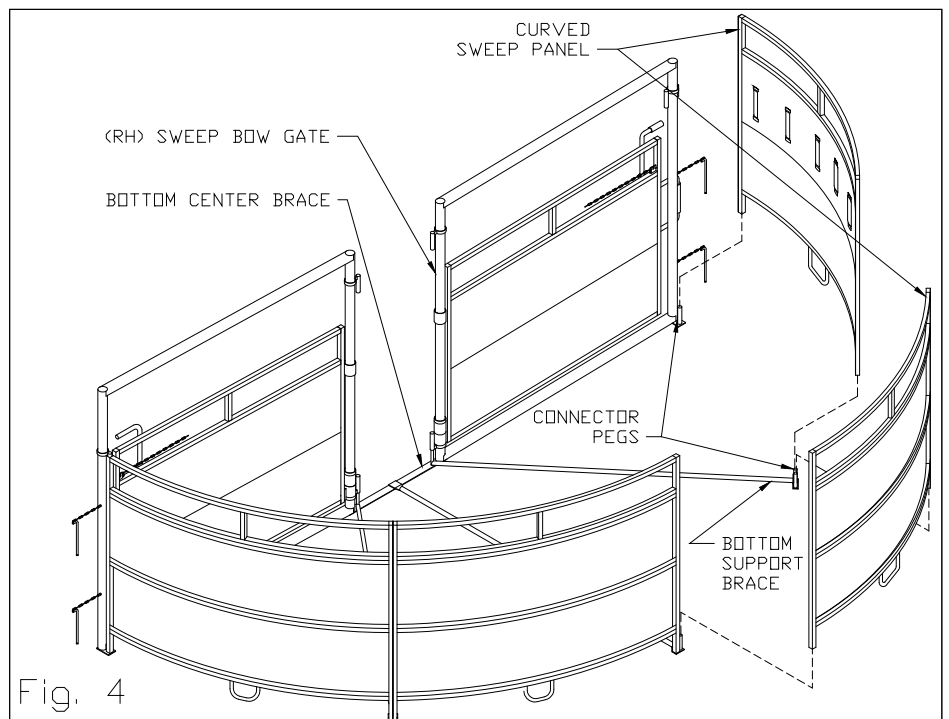
Secure the (*left-hand*) Sweep Bow Gate to the Curved Sweep Panel by sliding the top connector pin into the end tube of the curved panel as shown.

The (*right-hand*) Sweep Bow Gate is installed in the same manner as the (*left-hand*) Sweep Bow Gate was in step 1.

Lower the (*right-hand*) Sweep Bow Gate onto the connector pegs on the Bottom Center Brace and Bottom Support Brace as shown in figure 3.

**STEP 4:**

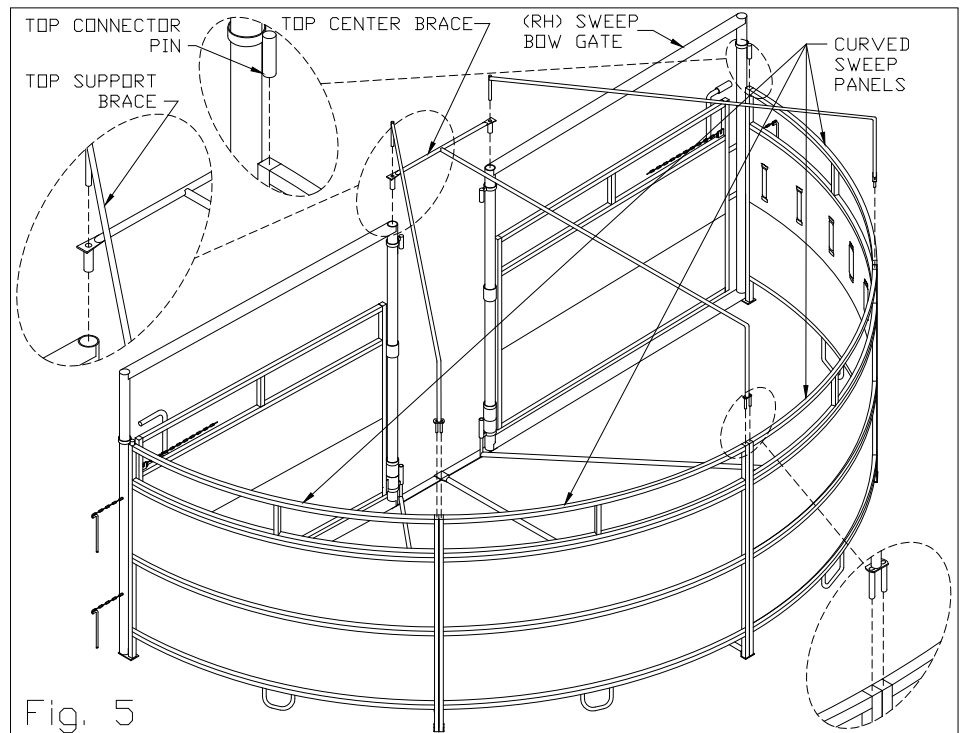
Place the remaining two Curved Sweep Panels onto the connector pins on the (*right-hand*) Sweep Bow Gate, Bottom Support Brace, and Bottom Center Brace as shown in figure 4.



**STEP 5:**

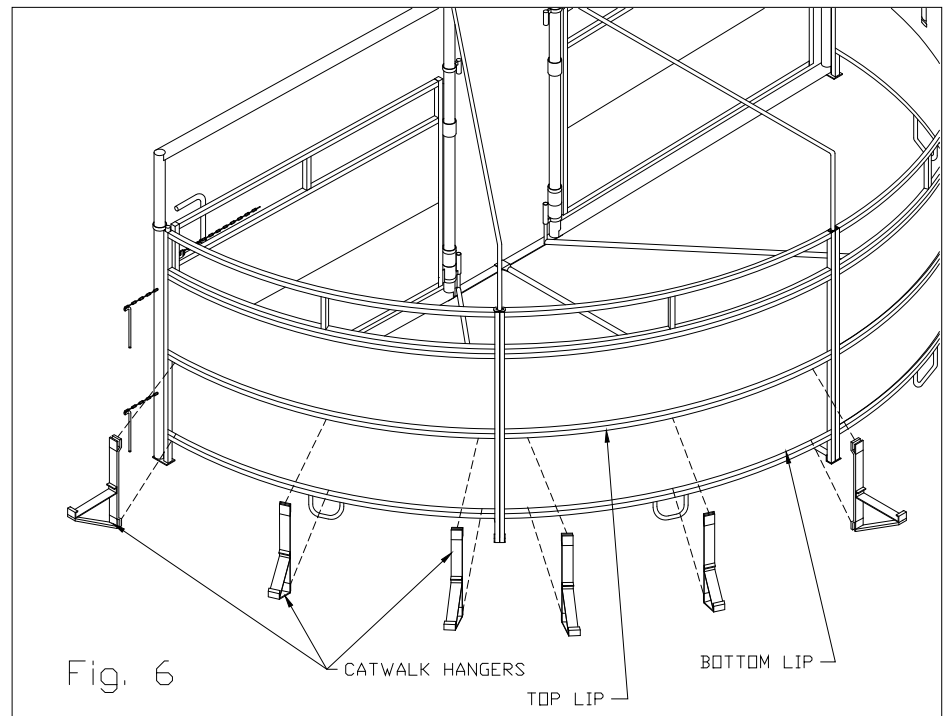
Secure the (*right-hand*) Sweep Bow Gate to the Curved Sweep Panel by sliding the top connector pin into the end tube of the curved panel as shown.

Secure the Sweep Bow Gates and Curved Sweep Panels together by sliding the Top Center Brace and Top Support Braces into the end tubes of the Curved Sweep Panels and Bow Gates as shown in figure 5.

**STEP 6:**

Slide the bottom end of the Catwalk Hanger over the bottom lip of the inside Curved Alley Panel. Then tilt the hanger to one side until it is possible to slide the top of the hanger over the top lip of the Curved Alley Panel.

Place two Catwalk Hangers on each end of one Curved Alley Panel as shown in figure 6.



**STEP 7:**

Slide the inside edge of the Catwalk into the inside hook on the Hanger. (You may need to slide the Hanger so that it is positioned between two Horizontal Crossbars on the Catwalk.) Push in on the outside Vertical Support until the Catwalk drops into place. Position the Catwalk and Hangers evenly along the Curved Panel.

The Catwalk Joint Plate is slid onto the ends of two adjoining Catwalk sections as shown in figure 7.

