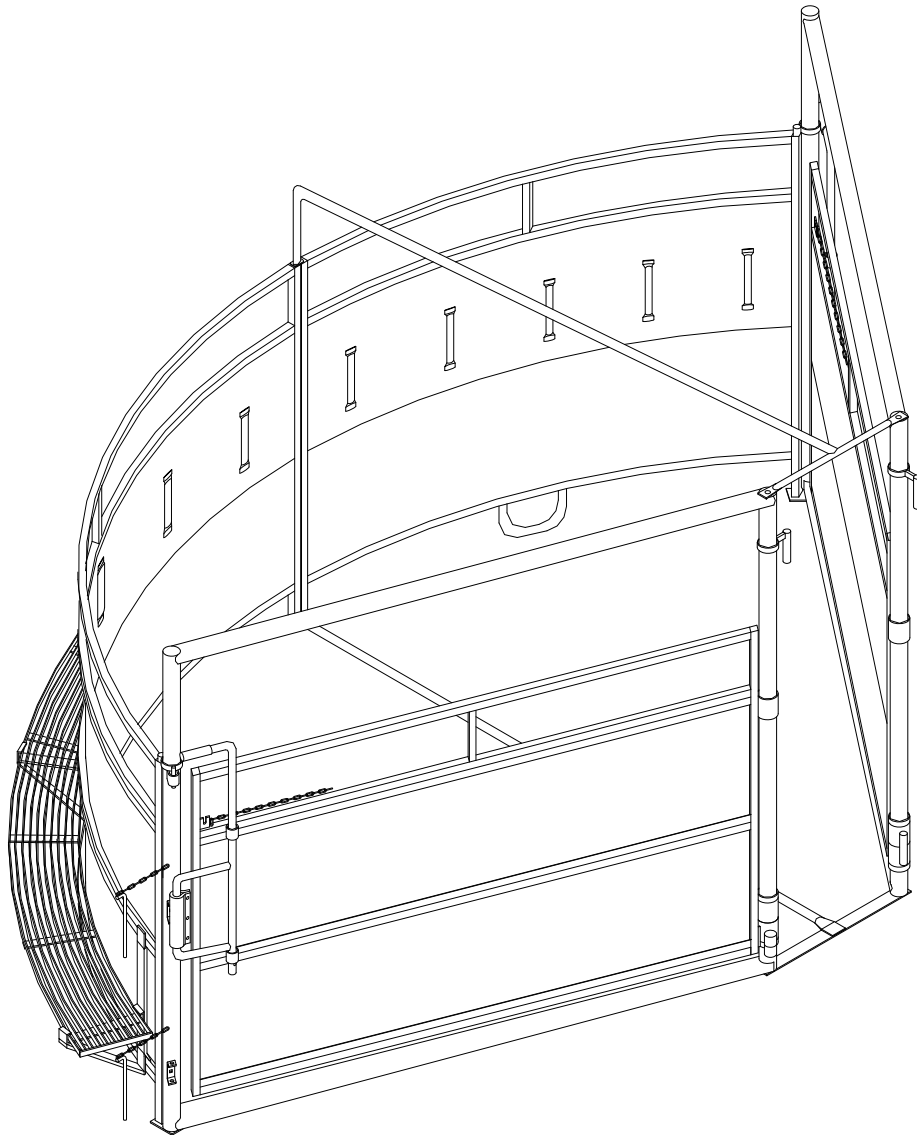


SYSTEM 2000 QUARTER SWEEP TUB

ASSEMBLY INSTRUCTIONS

#007-50200



POWDER RIVER

• LIVESTOCK HANDLING EQUIPMENT •

www.powderriver.com

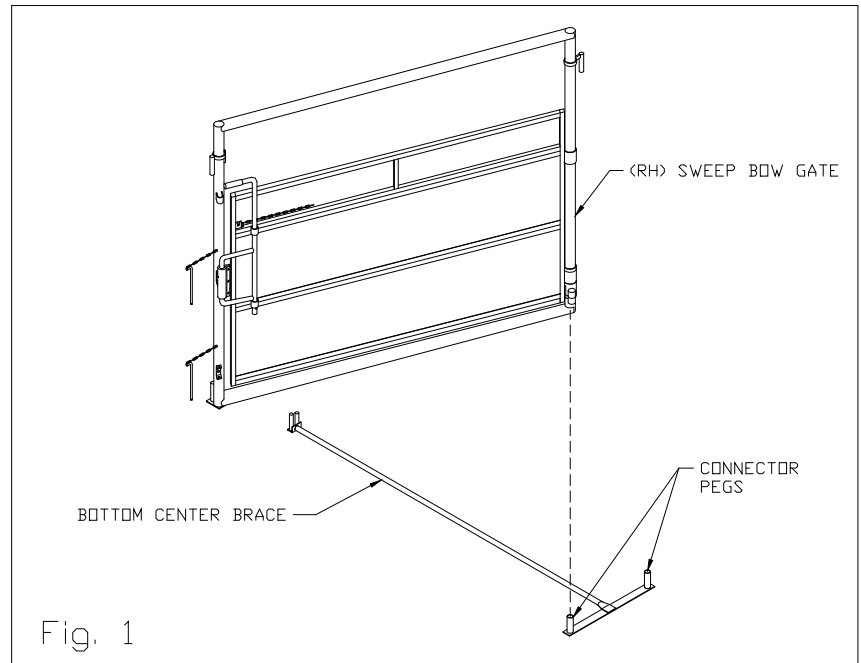
1-800-453-5318

STEP 1:

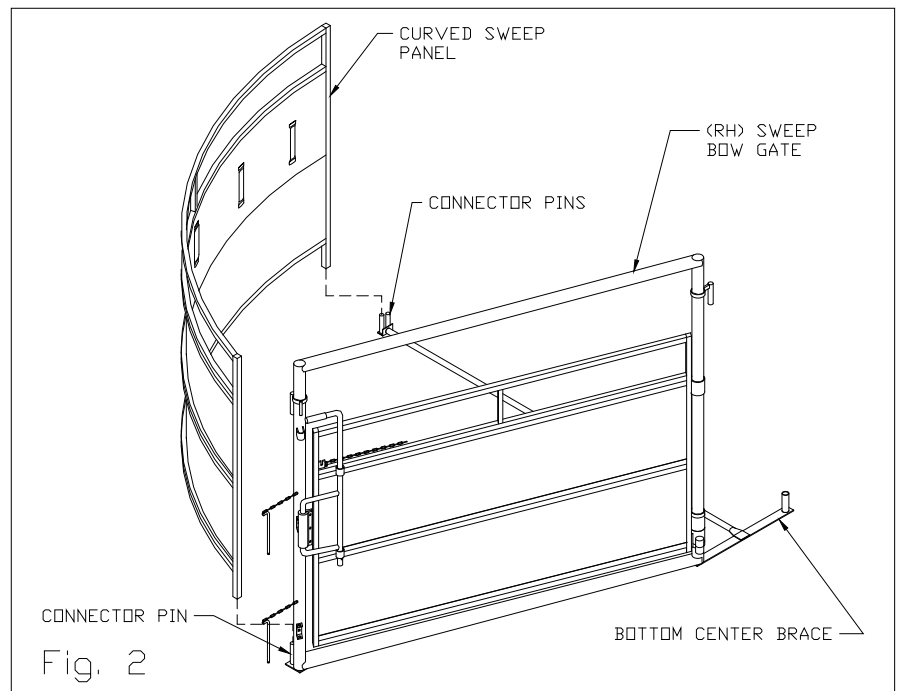
Place the alley end of the Bottom Center Brace where the alley will begin. Slide the (right-hand) Sweep Bow Gate onto the Connector Peg on the Bottom Brace as shown in figure 1.

**CAUTION!**

GATES AND PANELS ARE HEAVY AND WILL FALL OVER IF NOT PROPERLY SUPPORTED WHILE BEING INSTALLED!

**STEP 2:**

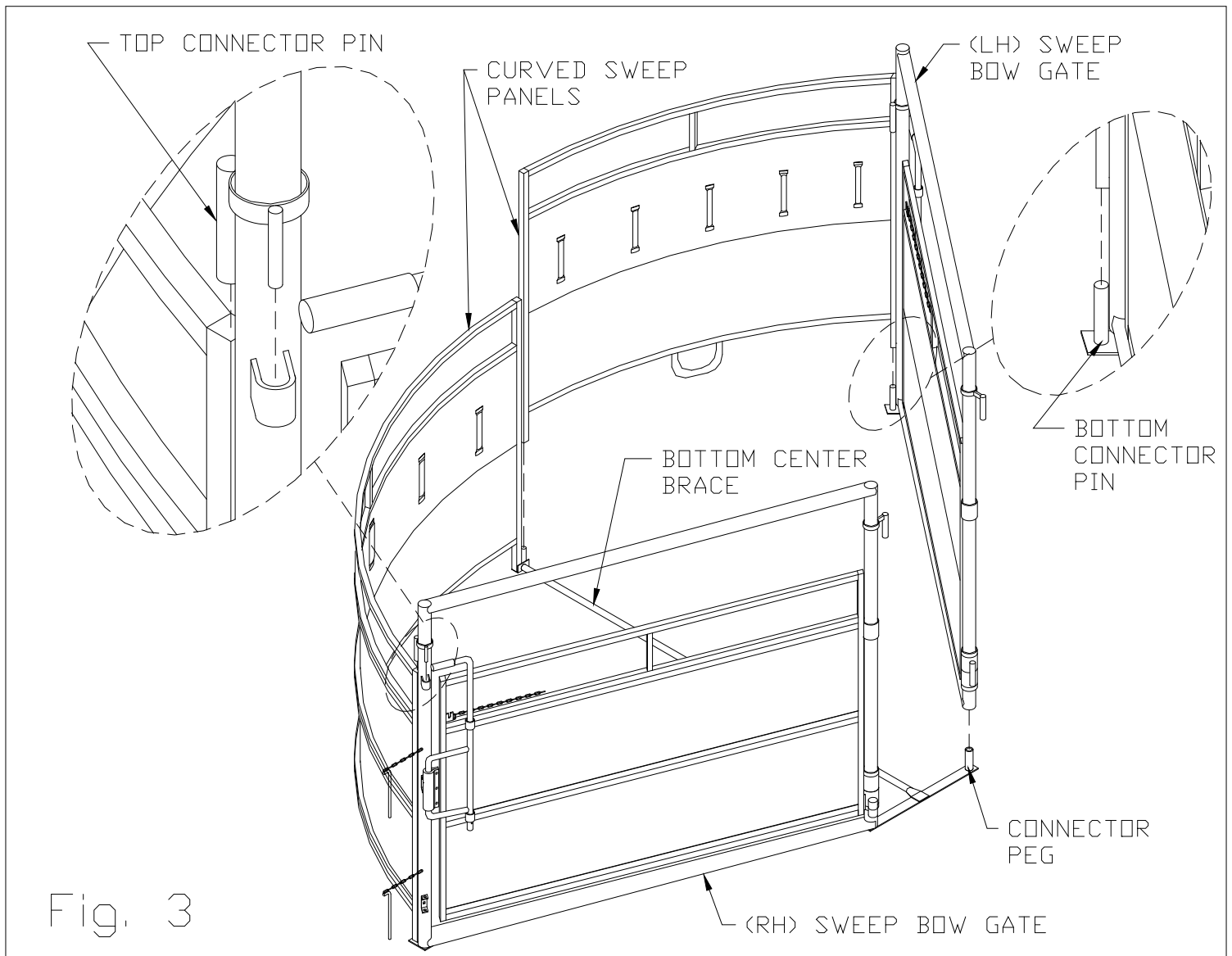
Slide one of the Curved Sweep Panels onto the Connecting Pins on both the Bottom Brace and Sweep Bow Gate as shown in figure 2.



STEP 3:

Secure the (*right-hand*) Sweep Bow Gate and the Curved Sweep Panel together by sliding the Top Connector Pin into the top of the end tube on the Curved Panel as shown in figure 3.

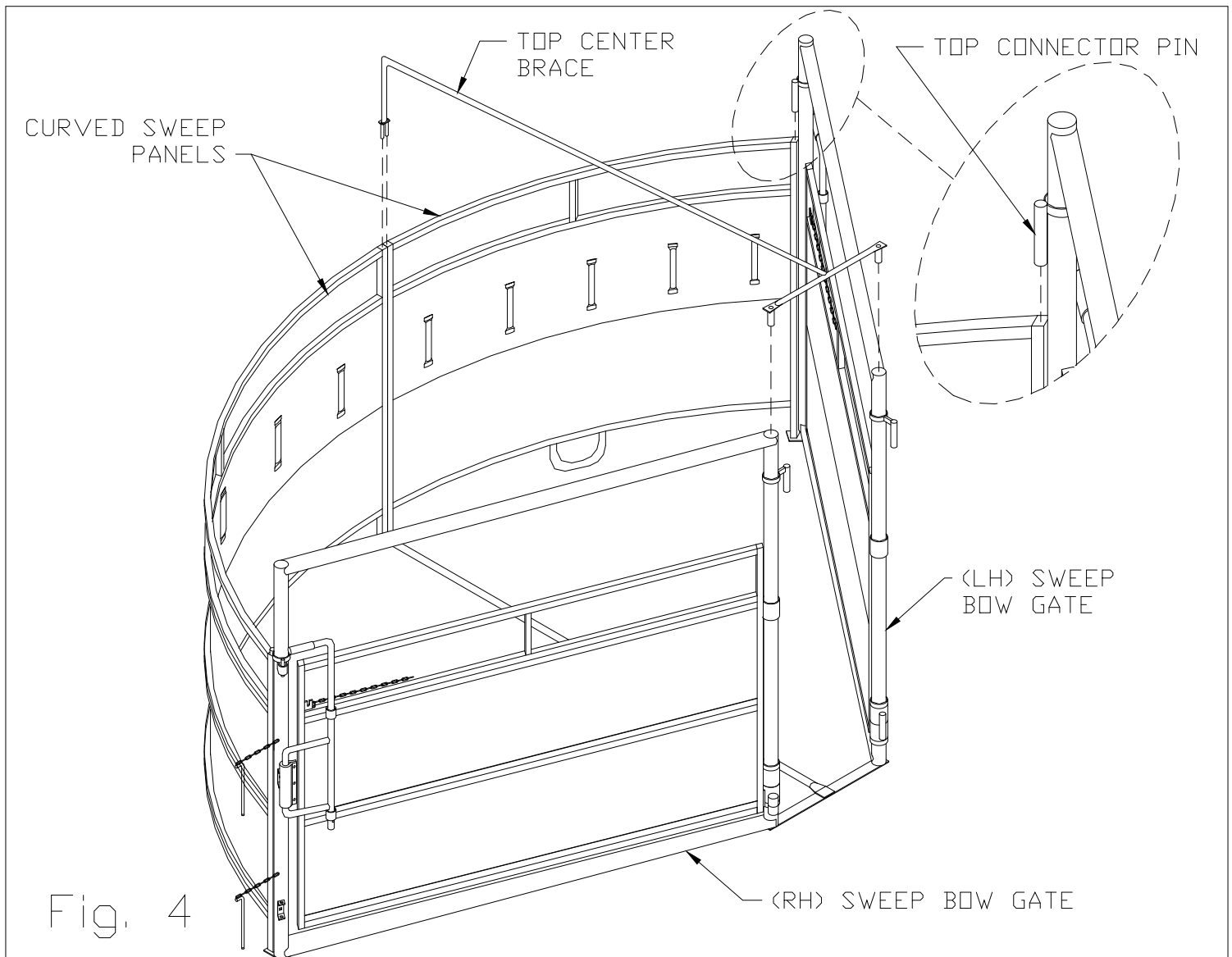
Place the (*left-hand*) Sweep Bow Gate onto the Bottom Brace Connector Peg as shown. Then slide the remaining Curved Sweep Panels on the Connector Pins as shown in figure 3.



STEP 4:

Secure the (*left-hand*) Bow Gate to the Curved Sweep Panel by sliding the Top Connector Pin into the top of the end tube on the curved panel as shown in figure 4.

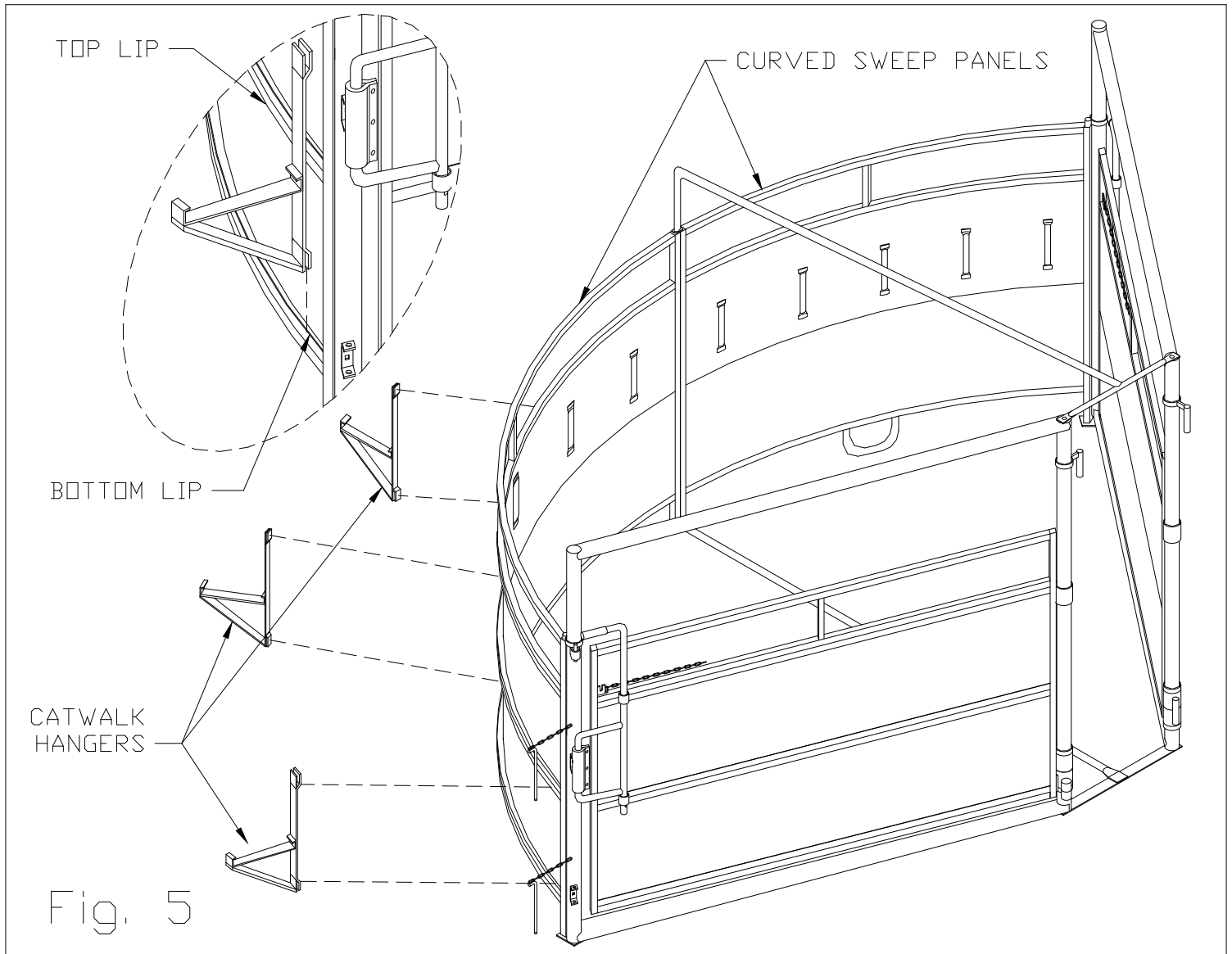
Place the Top Center Brace into the tops of the end tubs on the Curved Sweep Panels and Bow Gates as shown in figure 4.



STEP 5:

Slide the bottom end of the Catwalk Hanger over the bottom lip of the Curved Sweep Panel. Then tilt the Hanger to one side until it is possible to slide the top of the Hanger over the top lip of the Curved Sweep Panel.

Place three Catwalk Hangers evenly spaced on each Curved Sweep Panel as shown in figure 5.



STEP 6:

Slide the inside edge of the Catwalk into the inside hook on the Hanger. (You may need to slide the Hanger so that it is positioned between two Horizontal Crossbars on the Catwalk.) Push in on the outside Vertical Support until the Catwalk drops into place. Position the Catwalk and Hangers evenly along the Curved Panel.

The Catwalk Joint Plate is slid onto the ends of two adjoining Catwalk sections as shown in figure 6.

