

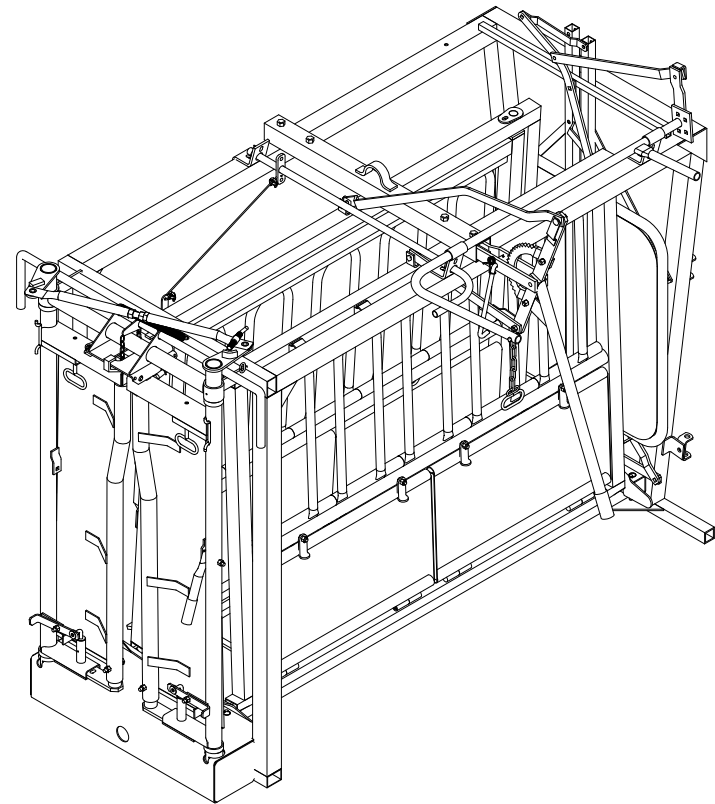
# Heavy Duty Self Catch Chute

Operating Instructions  
Order # 002-20056



P.O. Box 50758  
Provo, Utah 84605

Phone: 1-800-453-5318  
Fax: 1-801-377-6927  
[www.powderriver.com](http://www.powderriver.com)



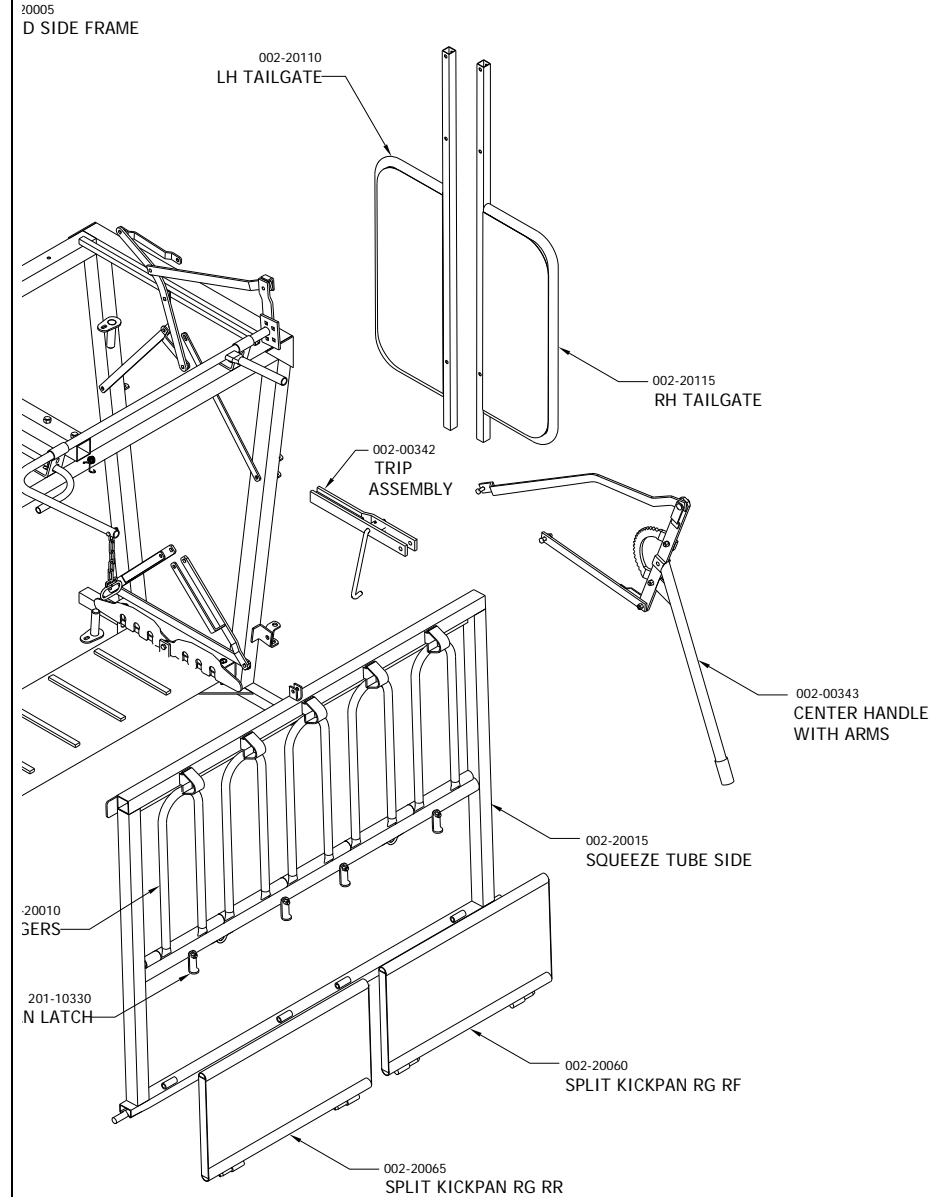
07/07/05



[www.powderriver.com](http://www.powderriver.com)

We congratulate you on your purchase of the Powder River HDSC Chute! Since 1938, we at Powder River have dedicated ourselves to making America's best livestock handling equipment. You have purchased just one of the many quality products made by Powder River. We are glad that you have chosen our product and hope you will repeat your business.

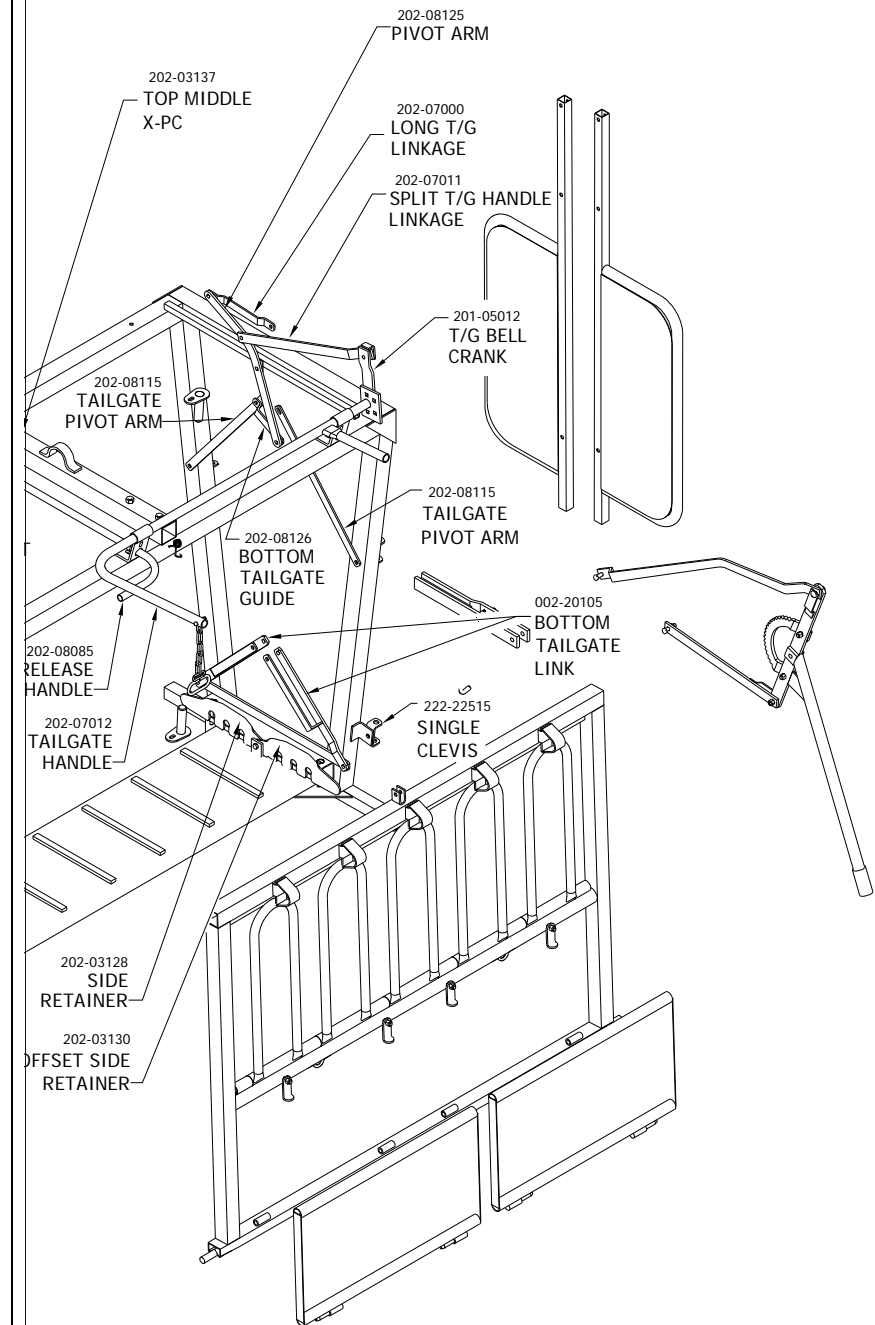
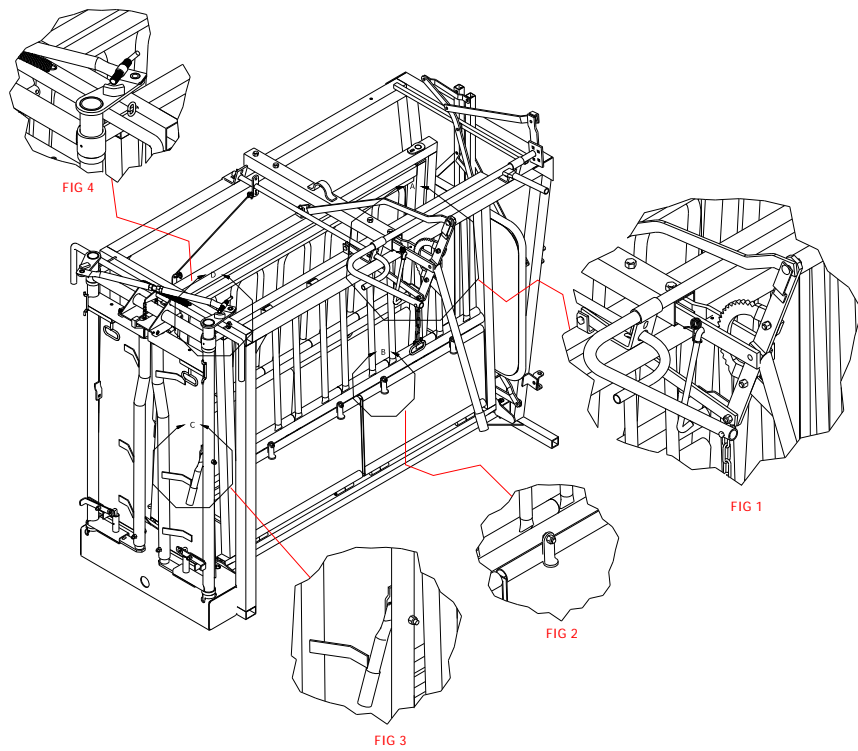
This guide will facilitate your use of the HDSC Chute. If in the event you have problems that this guide cannot answer we invite you to contact us at [www.powderriver.com](http://www.powderriver.com) or call us at (800) 453-5318.

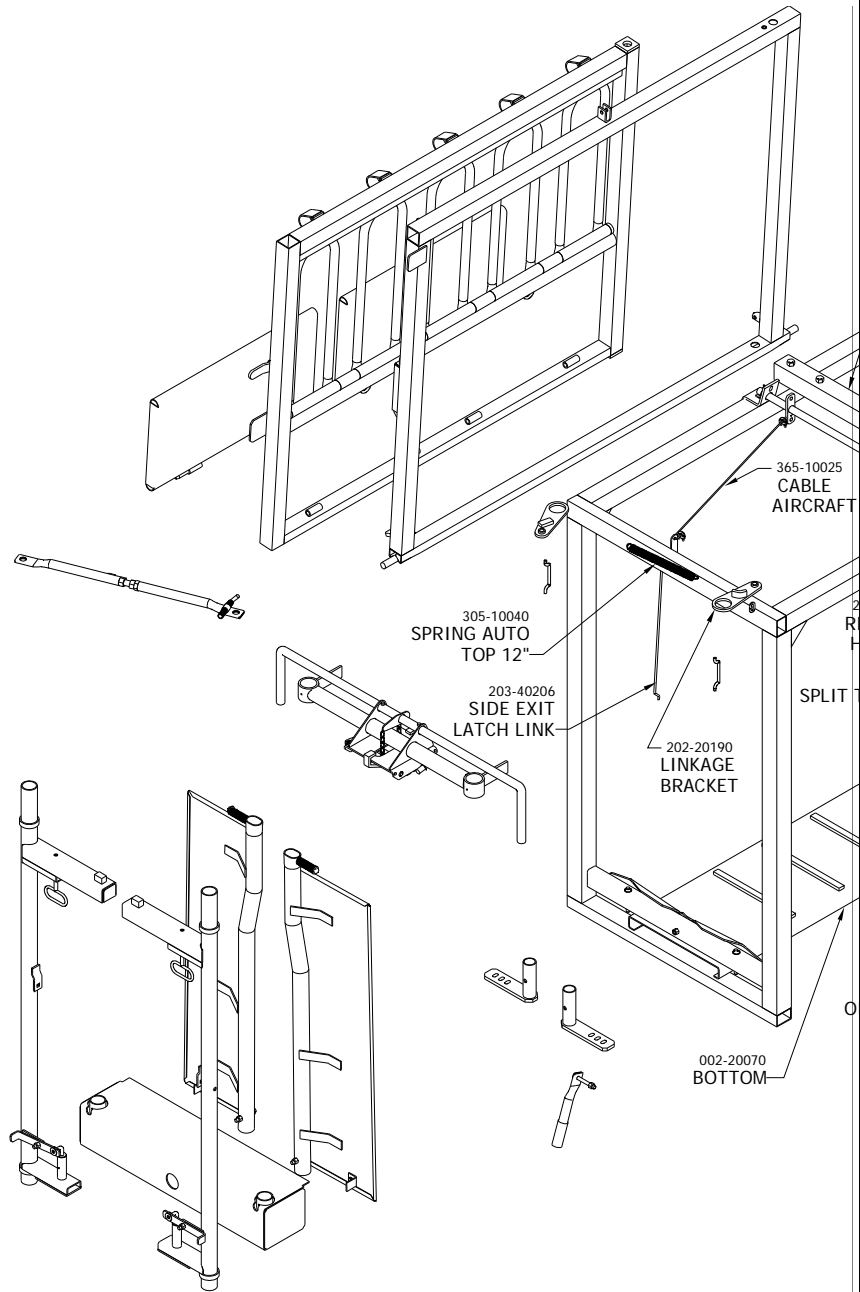




## Getting Started

Many of the bolts on the HDSC Chute have been tightened for shipping and will need to be loosened for optimal operation. You will only need to loosen the bolts enough to allow free movement for the joints of the chute. Do not completely remove the bolts or loosen them too much.





1. Mount the center control handle for the sides. Hook up the linkage and adjust (see fig 1, also instructions in **working parts** section – p8). Be sure set screws are tightened.

2. The kick panel is located below the drop side fingers on both sides of the chute. It is also held into position by two latches, two for each kick panel. Fig. 2 gives a closer view of the latch. The kick pan latches need to be loosened to facilitate lowering the kick panel. These bolts are generally very tight and need to be turned only one full rotation or until it moves freely.

3. On the front end of the HDSC Chute there is a handle with yellow grip half way down the frame, as show in Fig. 3. The Side Stanchion handle is held into position by a single bolt. This bolt also needs to be loosened just enough to allow the stanchion handle to move freely between a vertical position and horizontal position. Generally this bolt only needs one full rotation.

4. Directly above the Side Stanchion handle there is a bar that crosses the frame with a spring attached to it; this is the Top Linkage. It is shown more closely in Fig. 4. The two bolts holding the Top Linkage should be loosened enough for the headgate to operate freely.

## **Set Up:**

After all of the necessary bolts have been loosened the chute should be adjusted to accommodate the size of the animal. This is the most important step in setting up your chute. The HDSC Chute can be adjusted in three ways. The first two of these adjustments change the size of the chute to better fit the size of the animal. The last adjustment opens the gate more from the animal's vantage point, which helps lure the animal into the chute.

Note: If the head-gate is set too far open, then you have the potential of hip-locking the animal. Set it about three inches wider than the animal's head.

Fig2

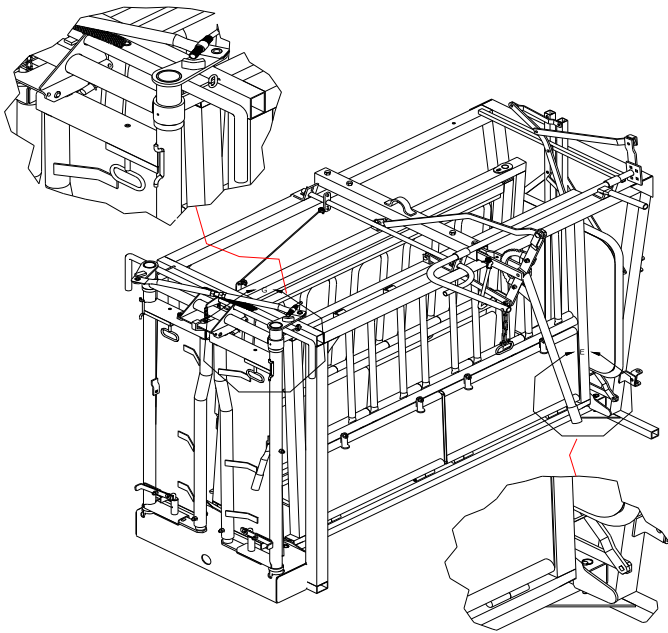


Fig 1.

The first adjustment controls the width of the squeeze chute as well as the opening of the head gate. Side retainers are found at the foot of the chute on both ends, as shown in Fig. 1. The side retainer is a long, sloping bar, with three notched settings. The notches are designed to fit over the side retainer pin.

## **Fingers**

The fingers are designed to drop out of the way to allow free access to the animal's sides. They are located on both sides of the chute. Push the finger latch up and lower the fingers by pulling them outward.

## Tail Gate

The tailgate is located at the rear end of the chute. A tailgate handle is connected to the tailgate and locks in the open position.

To close the gate, simply push up on the handle. The tailgate will drop into the closed position.

## Squeeze Chute

The lever located on the side frame operates the actual squeezing of the chute. As the lever is pushed the squeeze is locked into position squeezing the animal. To release the animal, locate the release lever. The release lever is a small diameter green pin with a ninety-degree bend on the end of it. Pull this lever up to release the gears and pull the squeeze lever away from the animal. This will loosen the chute around the animal.

## Side Exit

The side exit is a safety feature. This enables the operator to release an animal that won't exit out the front or an animal that goes down while in the chute.

Located on the top of the frame is a handle. Pulling on the handle releases the side exit. After the handle is pulled the side exit will fall open releasing the animal. To close the side exit, push the center squeeze handle. This lifts the side enough that it will fall closed.

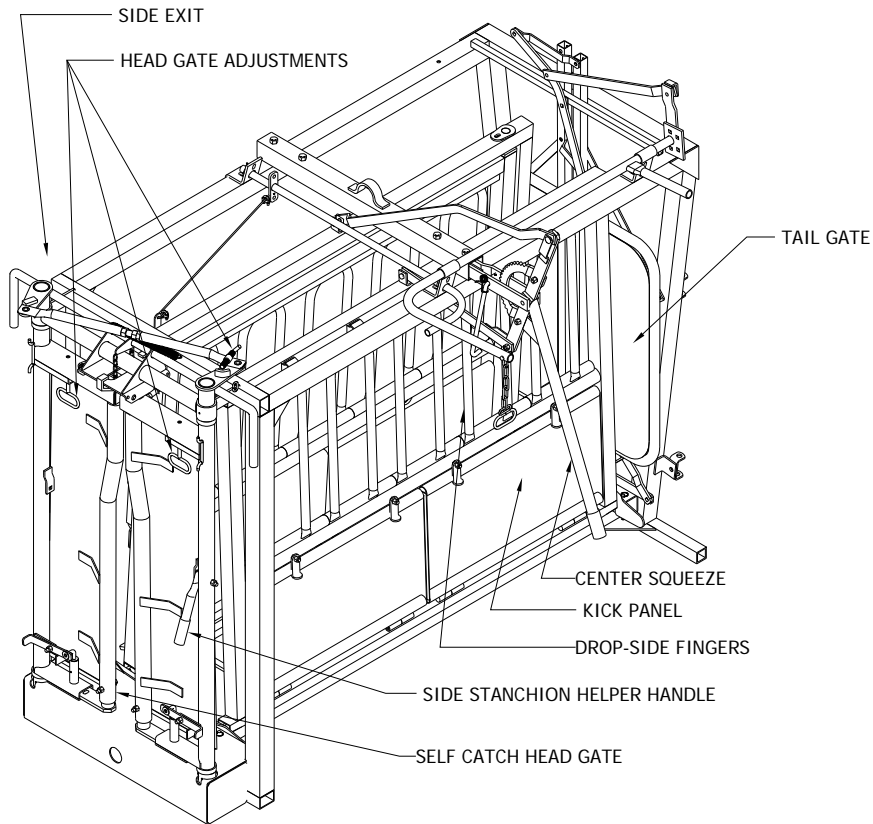
Lift both retainers on one side. After the retainer is raised, push or pull the side of the chute until the side ratchet lines up with the desired notch of the side retainers. The middle notch is designed to fit the average sized animal. Once the chute's side is lined up with the desired notch, lower the side ratchet, fitting the slot over the side retainer. Pushing the chute side narrows the opening for smaller animals and pulling the side widens the chute for larger animals. Repeat this process on the other side of the chute until you reach the desired width of the chute. The width of the head catch can be adjusted in two ways, as seen in figure 2. By pulling the pins down, you can adjust the width of the head catch. Then, you can fine tune by turning knob above the pins.



As a general safety precaution, adjust the width of the chute according to the size of the animal. Use innermost notch for smaller animals such as calves, the middle notch for average sized cattle or other similar sized animals, and the outside notch for larger animals such as pregnant cows, bulls, etc.

## **The HDSC Chute and its Working Parts**

Before actually operating the HDSC Chute with an animal we suggest that you become familiar with the working parts.



## **Head Gate**

Perhaps the most important part of the squeeze chute is the self-catch head gate. It has three positions: 1-Cocked, 2-Closed, and 3-Open. Above the self-catch head gate is the Self-catch Lever. This lever cocks, closes and opens the self-catch head gate.

To cock the self-catch head gate into position, push the lever towards the rear of the chute. The gate's doors will automatically swing back, and into the cocked position. The head gate should always be set to the cocked self-catch position before an animal actually enters the chute.

The second position of the self-catch head gate is the closed position. When the animal enters the chute its shoulders will push the head gate from the cocked position into the locked position holding its head in the head gate. To put the head gate in the open position you can use the Side Stanchion helper Handle.

The third position is open. To open the self-catch head gate, pull the lever away from the front end of the chute. Usually this will be enough to release the animal, but if the animal doesn't push itself through the gate, use the Side Stanchion lever to help open the gate. The Side Stanchion lever should be pulled in a swinging motion towards the side of the chute while holding the self-catch head gate in the open position. The gate's doors will swing out completely opening up the chute.

## **Kick Panel**

The Kick Panel is designed to allow access to the legs and hooves of the cow. The Kick Panel runs along the bottom on both sides of the chute. Push the Kick Panel latch up and lower the Kick Panel by pulling it outward.

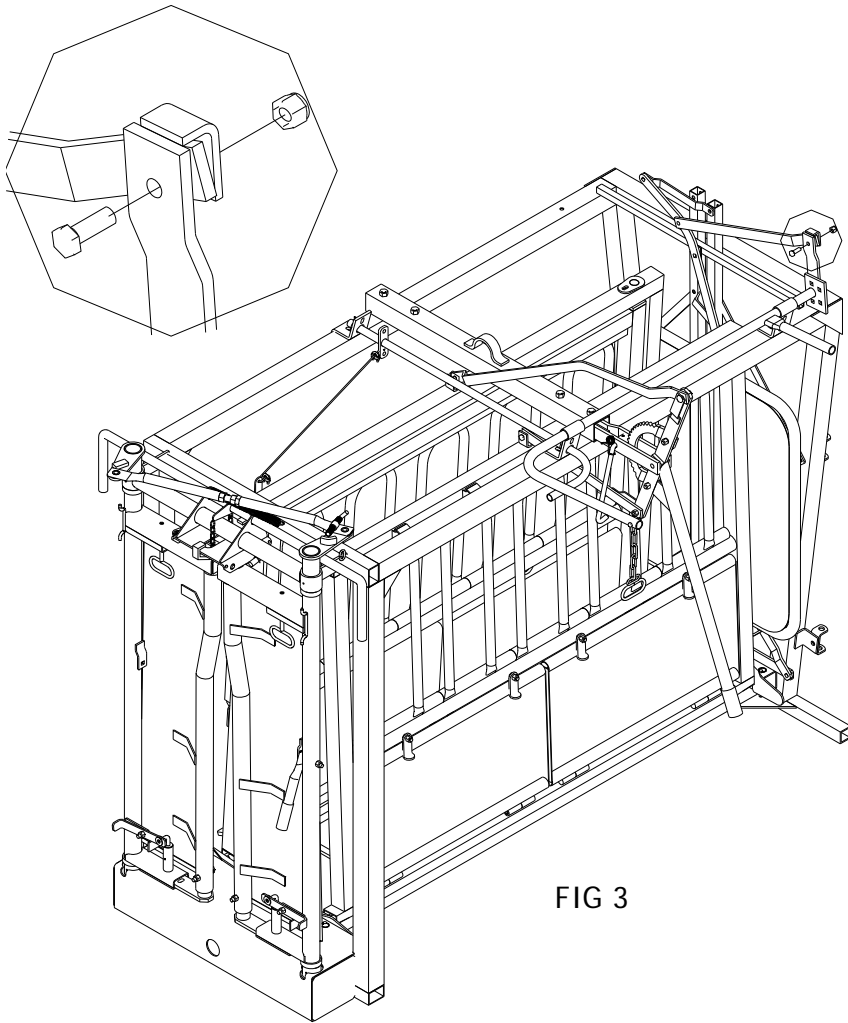
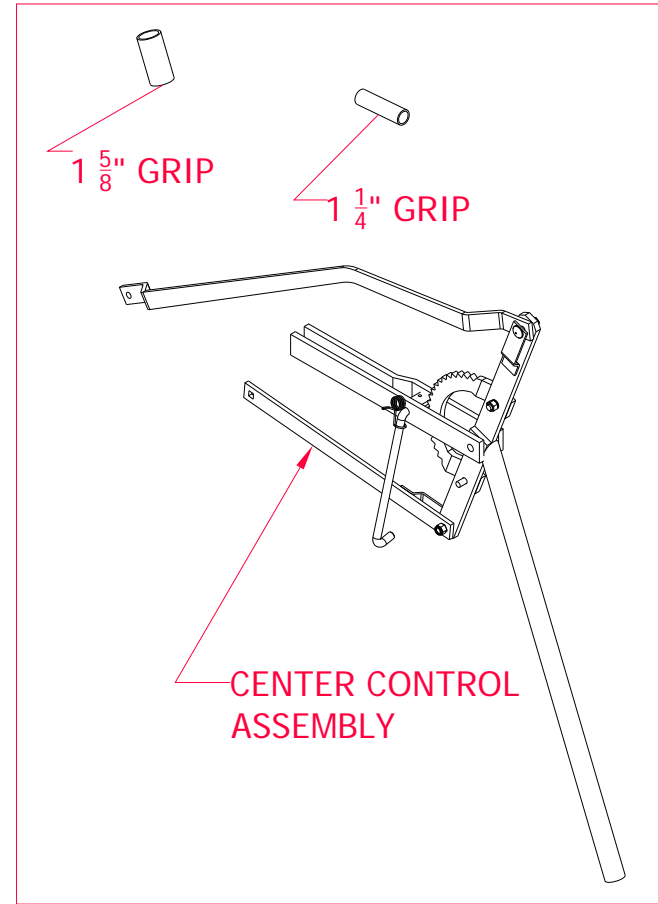


FIG 3

**STEP 3:**

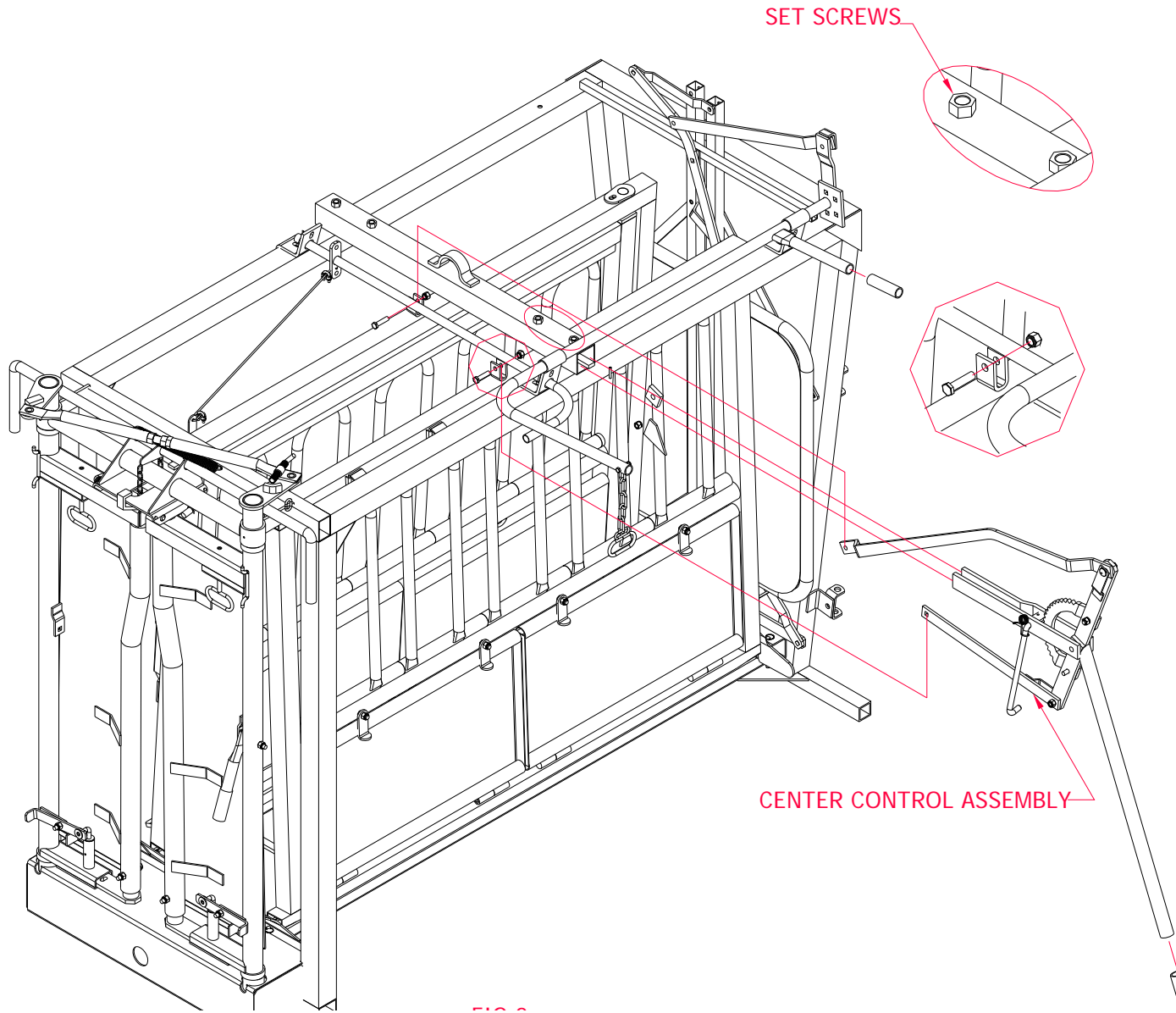
Lift the tailgate handle up so that the short arm on the end of the handle can be bolted to the tailgate strap as shown in fig. 3.



NOTE: When assembling a left-hand exit Chute, some procedures will be opposite from the pictures.

**STEP 1:**

Remove all packaging from the Chute and make sure that each part in figure 1 is accounted for.



**Step 2:**

Loosen set screws and slide center control assembly into square tube mounted on top of the chute.

Bolt the long center strap to the U-bracket on the far side of the chute as shown in figure 2.

Bolt the short center strap to the U-bracket on the other side of the chute as shown.

Place yellow handles on designated areas on chute.